
2D & 3D Scanner



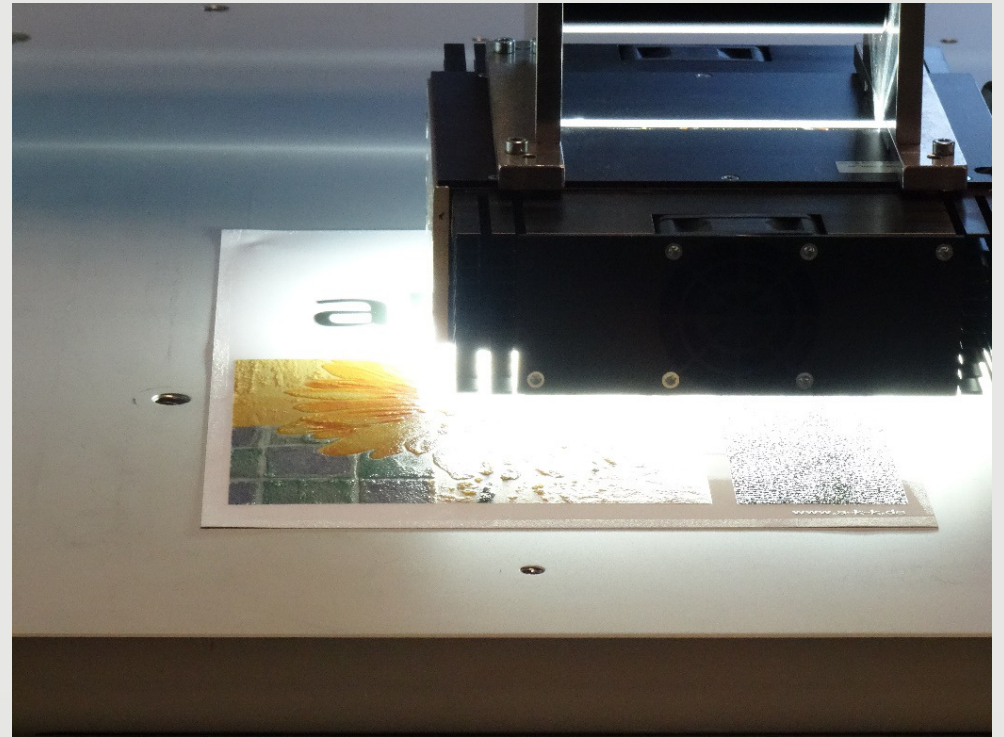
2D & 3D Scanner

3D & 2D scanner HD

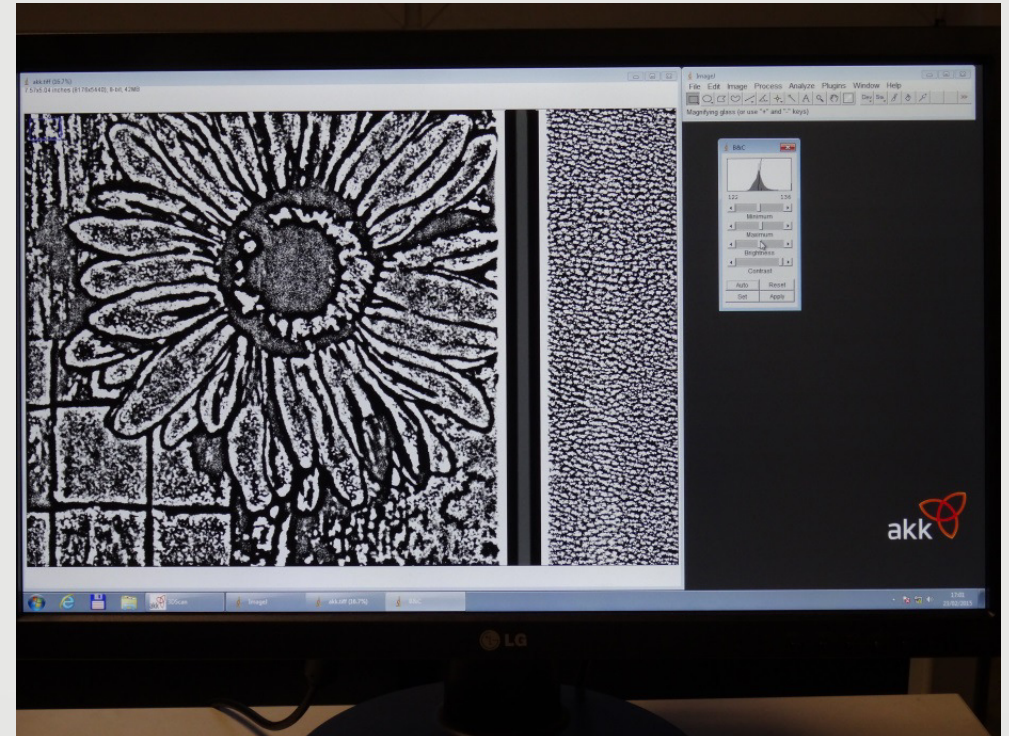
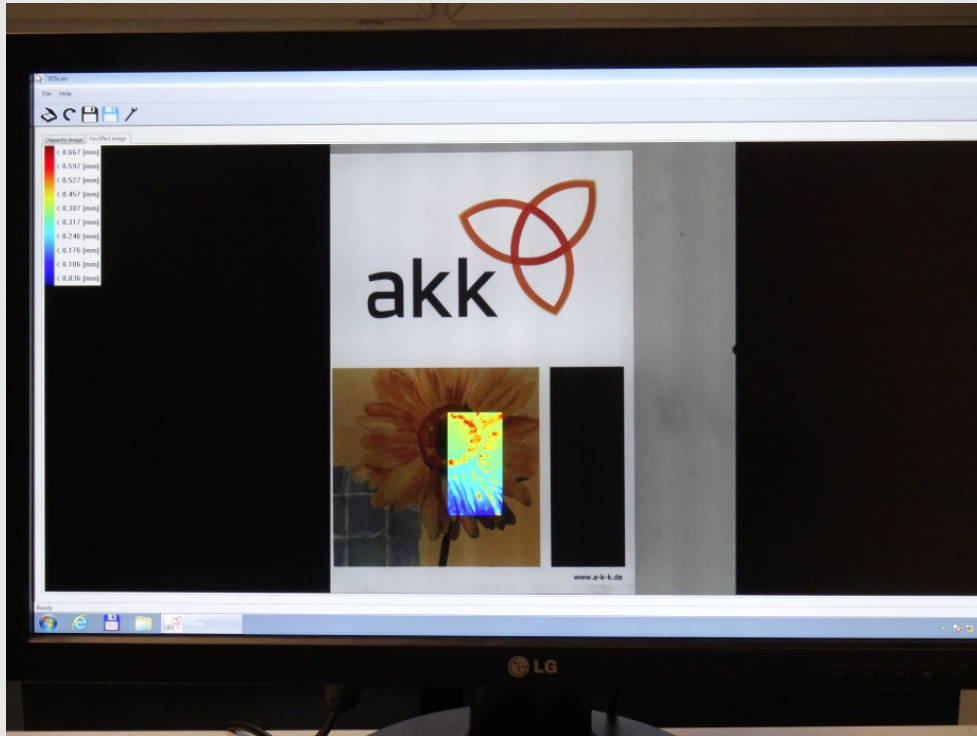


The scanner C800 was specially developed to suit the wallpaper and décor industry. The high precision table is equipped with linear motors which results in fast and precise scans. The scanner table can be supplied as a vacuum type, or with a self-adhesive plate surface. Due to the high speed of this machine, the whole unit is enclosed by covers for safety reasons. Due to a low gross mass of only 250 kg, the unit can easily be installed in office areas. The target object is scanned using a new technique, scanning the original into data strips, in 2D and 3D space simultaneously. The strips are stitched together seamlessly and very accurately. 1700 dpi is the maximum resolution, with physical depth in 3D, up to 3 mm, with a 16 bit data output. Total scanning time for a typical size of 50 x 60 cm is less than 30 minutes. The scan software has been developed by AKK GmbH, and adherence to our tradition of practical and a simple user interfaces, has been fulfilled. Thus, this scanner can be easily and safely operated by almost anybody.

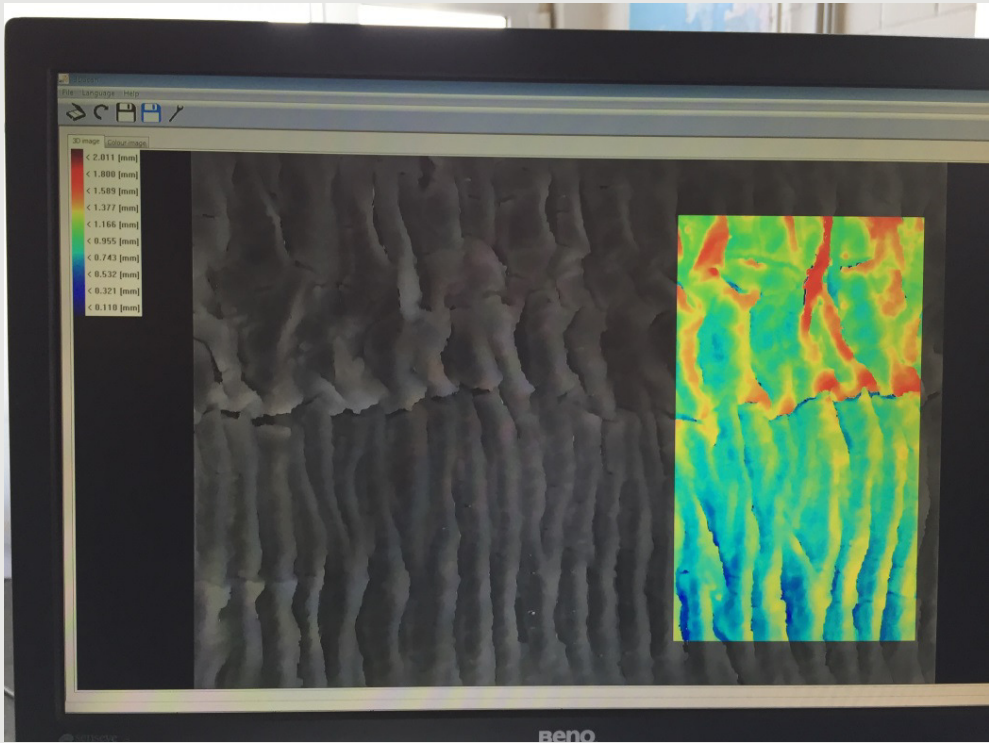
2D & 3D Scanner



2D & 3D Scanner

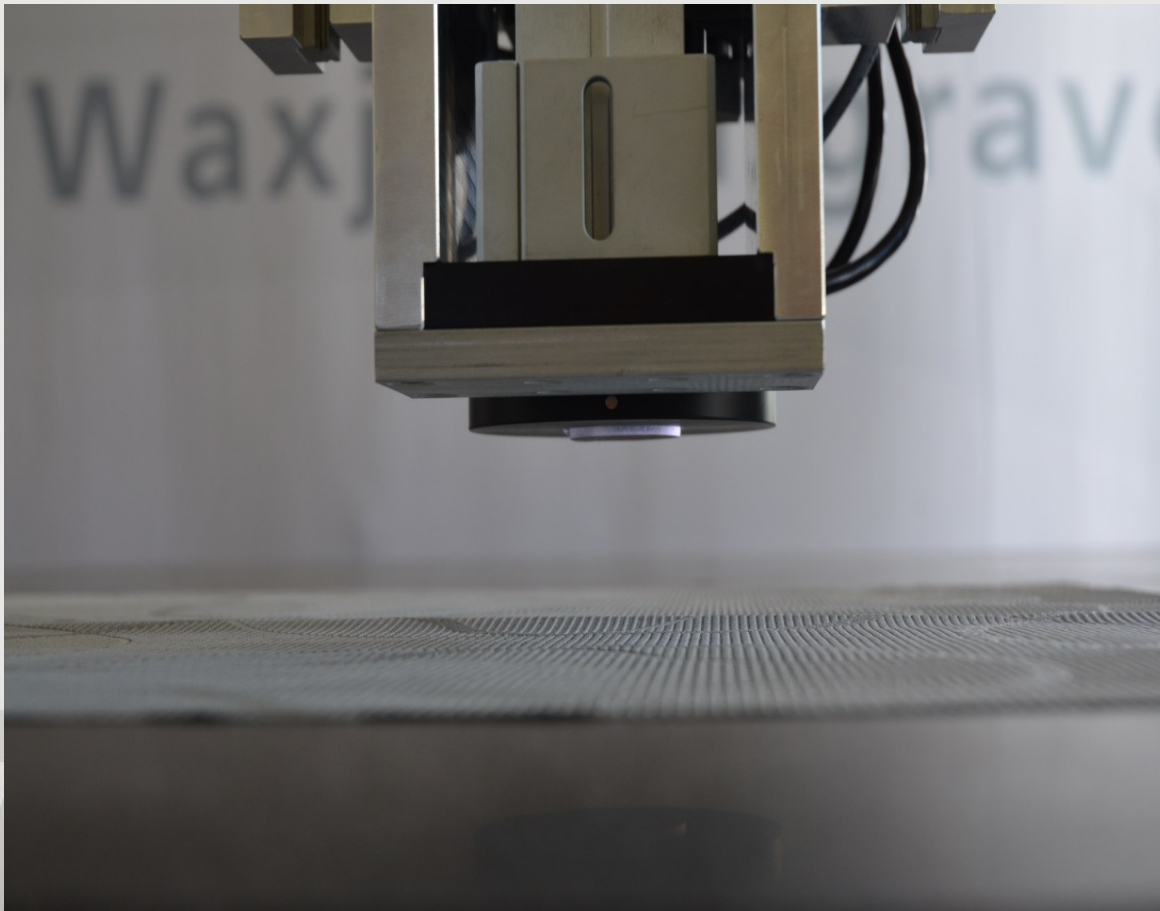


2D & 3D Scanner



3D Scanner

3D scanner UHD



The 3D scanner G800 has been developed for highly demanding applications such as the finest of textures and surfaces, including reflective types. Apart from leading customers in the automotive industry, it is well suited to the highest quality embossing applications of many types of scan surfaces. The scan head is equipped with a Gel-Pad, which is pressed onto the surface of the target scan object, and forms over the target structure, which is then illuminated from multiple light sources. In a sophisticated process, the shadow information is digitally captured and processed to determine the precise depth of each point in 3D space. The Gel-Pad is approximately 30 mm x 30 mm; and in a step and repeat mode, the surface is scanned with overlaps, which are required to stitch the design together. A resolution of up to 3600 dpi is achieved and finest scan data can be captured and processed. For example, the hair cells of leather textures can be accurately scanned and processed in very high detail. Since this system produces large amounts of digital data, we limit the scan size to approximately 20 cm x 20 cm. However, completed scans can easily be assembled into larger files in the software. By utilising this Gel-Pad system, there are no issues presented due colour differences of target objects, even reflective materials such as gold, bronze etc. This scanner is suited to difficult, demanding scans; and should be operated by a professional person.

3D Scanner

